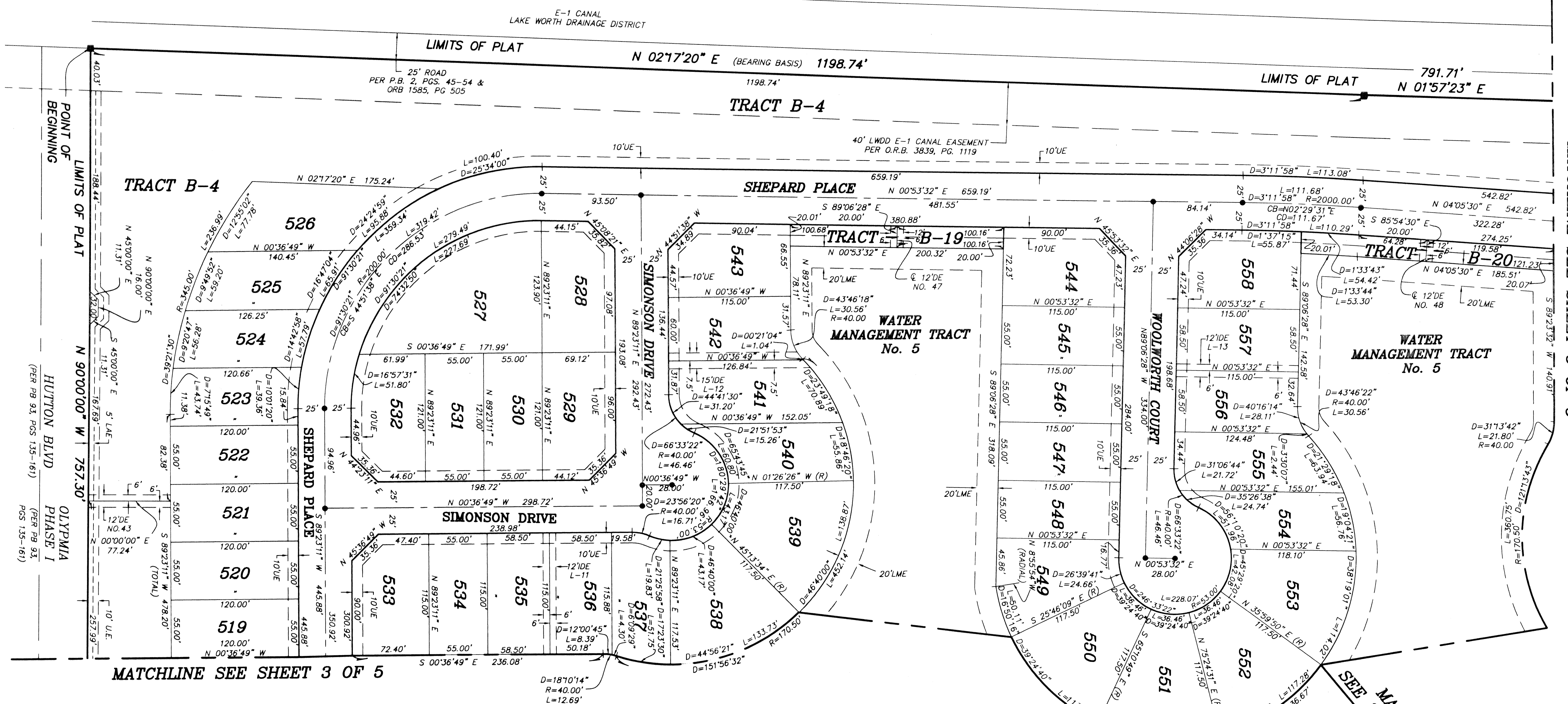


OLYMPIA PHASE I PARCEL "L" REPLAT
 BEING A REPLAT OF BLOCK L, WATER MANAGEMENT TRACT No. 5, WABUTON TERRACE, SHEPARD PLACE, SIMONSON DRIVE, WOOLWORTH DRIVE AND A PORTION OF TRACT B-4, AS ALL ARE SHOWN ON OLYMPIA PLAT I, AS RECORDED IN PLAT BOOK 93, PAGES 135 THROUGH 161 OF THE PUBLIC RECORDS OF PALM BEACH COUNTY FLORIDA. IN SECTION 18, TOWNSHIP 44 SOUTH, RANGE 42 EAST, VILLAGE OF WELLINGTON, PALM BEACH COUNTY, FLORIDA
 SHEET 4 OF 5
 JULY 2002



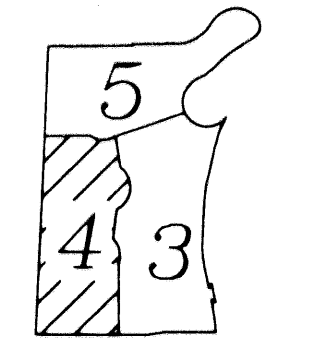
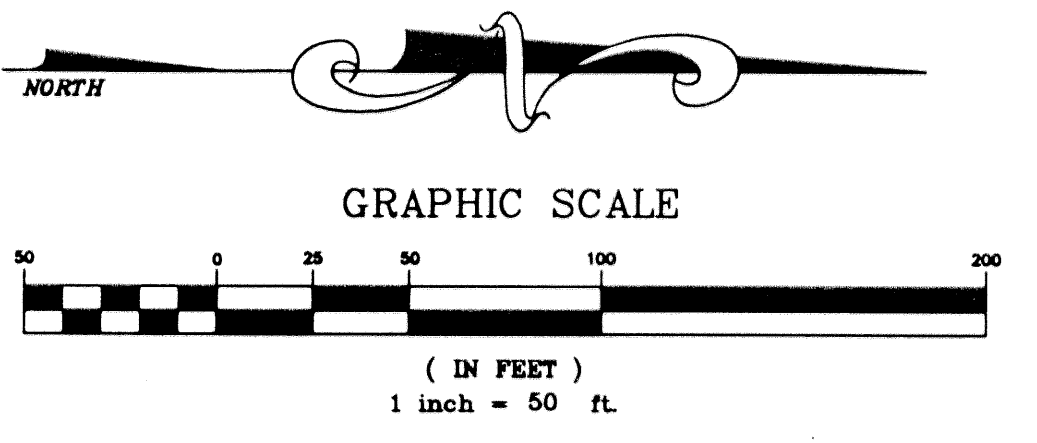
MATCHLINE SEE SHEET 5 OF 5

MATCHLINE SEE SHEET 3 OF 5

MATCHLINE SEE SHEET 3 OF 5

SEE MATCHLINE SHEET 5 OF 5

- LEGEND:**
- D = DELTA (CENTRAL ANGLE)
 - L = LENGTH
 - R = RADIUS
 - O.R.B. = OFFICIAL RECORDS BOOK
 - PG = PAGE
 - = PERMANENT REFERENCE MONUMENT "LB 4318" (UNLESS OTHERWISE NOTED)
 - = PERMANENT CONTROL POINT "LB 4318"
 - (R) = RADIAL
 - UE = UTILITY EASEMENT
 - DE = DRAINAGE EASEMENT
 - MREE = MAINTENANCE & ROOF EAVE EASEMENT
 - LME = LAKE MAINTAINENCE EASEMENT
 - LAE = LIMITED ACCESS EASEMENT
 - WMT = WATER MANAGEMENT TRACT
 - PB = PLAT BOOK
 - PGS = PAGES
 - IDE = INTERIOR DRAINAGE EASEMENT
 - CD = CHORD DISTANCE
 - CB = CHORD BEARING
 - LWDD = LAKE WORTH DRAINAGE DISTRICT
 - LMAE = LAKE MAINTAINENCE ACCESS EASEMENT



OLYMPIA PHASE I PARCEL "L" REPLAT	
	NICK MILLER, INC. <i>Surveying & Mapping Consultants</i>
	SUITE 105 2560 RCA BLVD. PALM BEACH GARDENS, FLORIDA 33410 TEL 561 627-5200 FAX 561 627-0983 D.B.P.R. LICENSED BUSINESS No. 4318
SHEET NO.	SCALE: 1"=50'
4	DATE: JULY 2002
	JOB NO. 1008.069
	FILE: 1008.069